

House and land package.

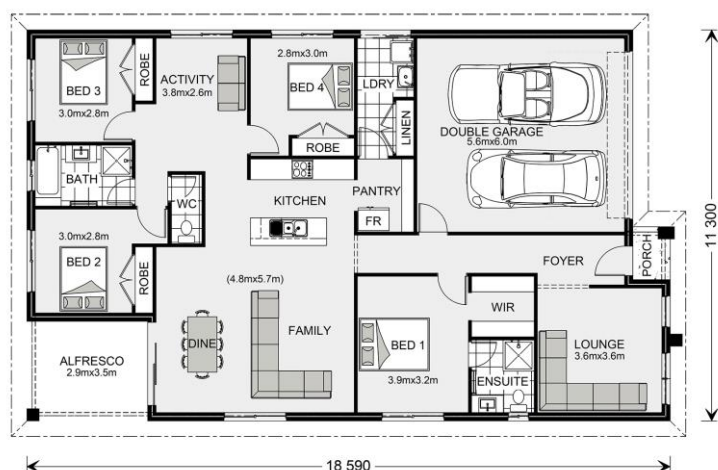


House and Land Package from \$436,810*

Address: Lot 1371 Moore Way , LUCAS PLATINUM (540sqm)

Inclusions:

- + 2440 ceiling height throughout
- + Westinghouse 600mm Kitchen Appliances
- + Flick Mixer tapware throughout
- + Carpet & Tiled flooring throughout
- + Dishlex stainless steel dishwasher
- + Concrete driveway including crossover
- + H1 Waffle Pod Slab Included



*Images and photographs may depict fixtures, finishes and features either not supplied by G.J. Gardner Homes or not included in any price stated. These items include furniture, swimming pools, pool decks, fences, landscaping - including planter boxes, retaining walls, water features, pergolas, screens and decorative landscaping items such as fencing and outdoor kitchens and barbecues. For detailed home pricing, please talk to a new homes consultant. Ballarat Regional Developments (CDB-U50435) business name G.J. Gardner Homes Ballarat

Brookfield 204 - EXPRESS SERIES



Give us a call or drop in for a chat today.

Office:
1/1021 Sturt Street
Ballarat Vic 3350

Gina Petrascu
Call: 0427 220 569
Email: ballarat@gjgardner.com.au
Or visit gjgardner.com.au

Welcome **home.**

G.J. Gardner. HOMES