



## House and land package from \$438,217\*

Address: Lot 1371 Moore Way, Lucas

### Inclusions:

- + H1 Waffle Pod Slab Included
- + 600mm Westinghouse Appliances
- + 2440mm ceiling heights throughout
- + Concrete driveway and crossover
- + Carpet & Tiles throughout
- + Dishlex Dishwasher Included

### Pacific 205 - Express Series

4  2  2 

**Give us a call or drop in for a chat today.**

#### Office:

Ballarat  
1/1021 Sturt St, Ballarat Vic 3350  
Ballarat Regional Developments Pty Ltd CDB-U  
50435

#### Brenden Barclay

New Home Consultant

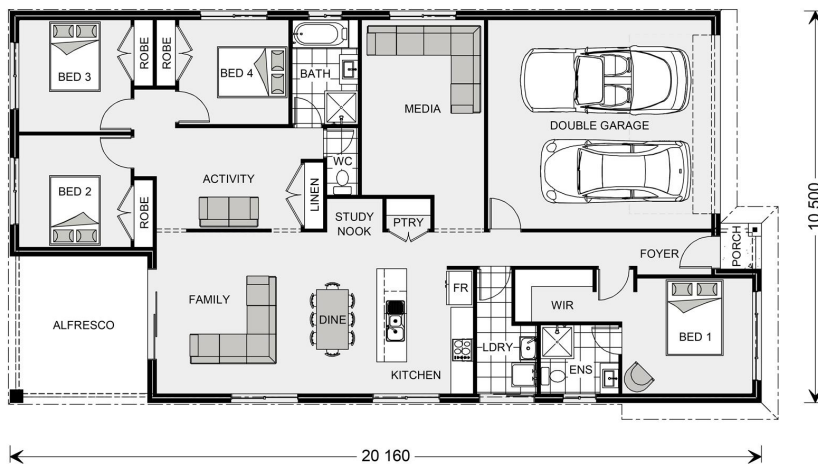
Call: 0409410911

Email: [brenden.barclay@gjgardner.com.au](mailto:brenden.barclay@gjgardner.com.au)

Call: 03 5334 4099

Email: [ballarat@gjgardner.com.au](mailto:ballarat@gjgardner.com.au)

Or visit [gjgardner.com.au](http://gjgardner.com.au)



\*Images and photographs may depict fixtures, finishes and features either not supplied by G.J. Gardner Homes or not included in any price stated. These items include furniture, swimming pools, pool decks, fences, landscaping - including planter boxes, retaining walls, water features, pergolas, screens and decorative landscaping items such as fencing and outdoor kitchens and barbeques. For detailed home pricing, please talk to a new homes consultant.

Welcome **home.**

**G.J. Gardner.** HOMES