

# Montville Prestige.



**Allow yourself to imagine the lifestyle you've always wanted, in the home you deserve!**

The Montville 462 offers a fresh take on the classic country lifestyle.

A sweeping floorplan with wraparound verandahs to the rear creates an airy, expansive feel, while clever design provides space and privacy for each family member. The wide entry foyer has easy access to formal lounge and dining rooms, and opens to reveal a huge living space with designer kitchen and butler's pantry.

To one side is an impressive master retreat with walk-in robe and luxury ensuite, while the other wing features four bedrooms, two bathrooms and a games room with built-in bar.

The Montville - Prestige offers individually crafted facades that will inspire you by providing a choice of homes that reflect your personal lifestyle and preferences.

Call **132 789**  
or visit **[gjjardner.com.au](http://gjjardner.com.au)**

Welcome **home.**

**G.J. Gardner.** HOMES

## Montville facade options.

G.J. Gardner's tailored facades give you the opportunity to personalise your home. With Executive, Resort, Manor and Urban facades to choose from, you can bring your home to life, making it as individual as you are!

EXECUTIVE



RESORT



MANOR



URBAN



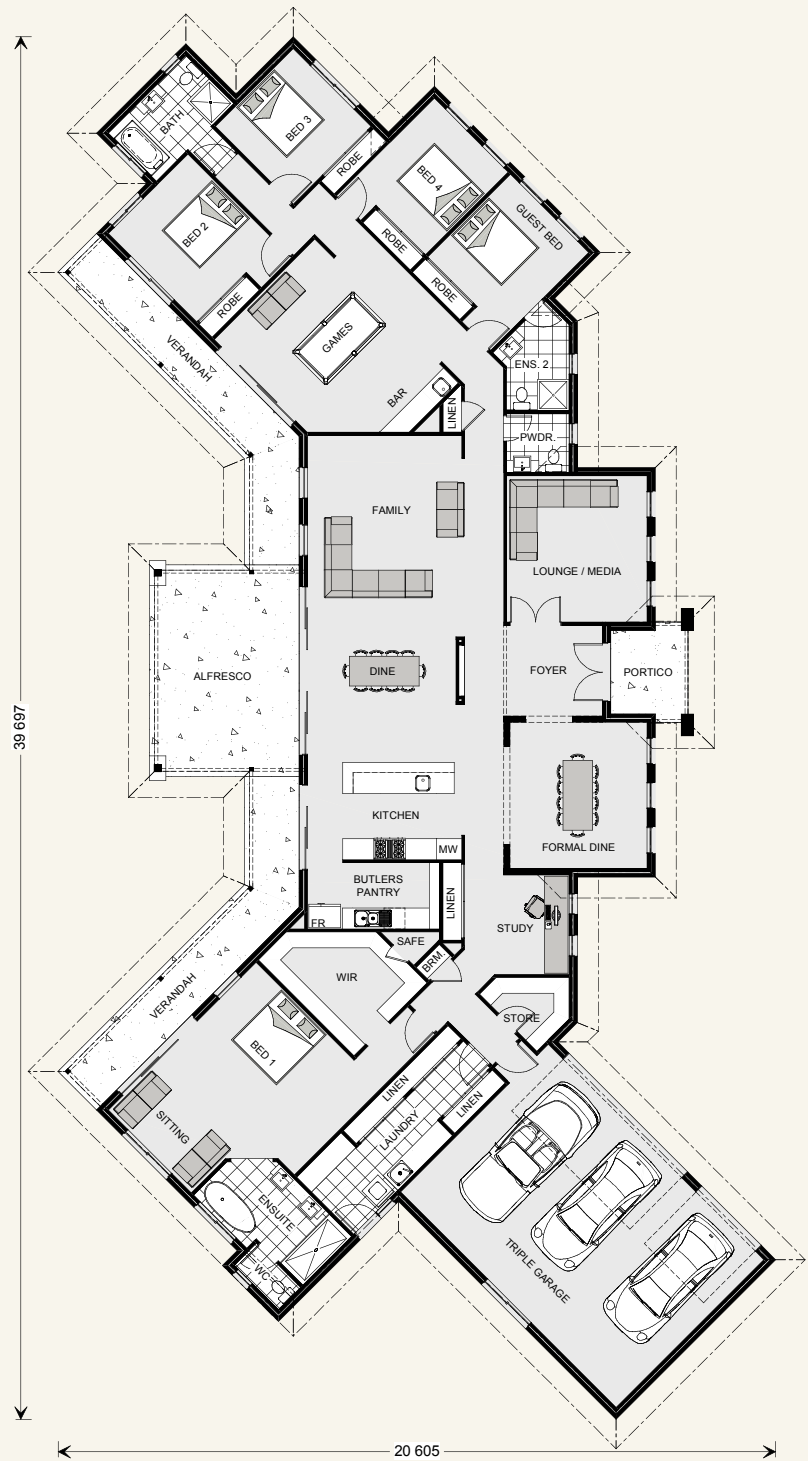
Images may depict fixtures, finishes and features not supplied by G.J. Gardner Homes. These items include planter boxes, retaining walls, water features, pergolas, screens and decorative landscaping items such as fencing and outdoor kitchens and barbecues.

## Montville 462.

5  3.5  3 

### FEATURES

- + Huge games room with built-in bar
- + Designer kitchen with butler's pantry
- + Luxury country-style living with wraparound verandahs
- + Private master retreat with luxury ensuite



### SPECIFICATIONS

**Living:** 335.4 sqm  
**Garage:** 58.9 sqm  
**Alfresco:** 26.1 sqm  
**Portico:** 5.8 sqm  
**Verandah:** 35.6 sqm  
**Total:** 461.8 sqm  
**Width:** 39.697 m  
**Length:** 20.605 m

### NOTES

---



---



---



---

---

**Locals always  
at hand.**

Designing and building your ideal home is an exciting experience, and when you partner with professional and established builders – G.J. Gardner Homes, the journey will be fulfilling and rewarding.



Internal photographs are from different G.J. Gardner Homes to those featured in this brochure.

Call **132 789**  
or visit **[gjjardner.com.au](http://gjjardner.com.au)**

**G.J. Gardner. HOMES**