

House & Land Package.



House and land package from \$529,196*

Address: Lot 17 Davallia Crescent, Drouin

Inclusions:

- + 20mm Caesarstone Benchtops
- + Concrete Driveway
- + LED Downlights
- + Tiled Shower Bases
- + 900mm Appliances
- + 2550 Ceiling Height

Balmoral - Homestead Series

4 2 2

Give us a call or drop in for a chat today.

Office:

Warragul

2/131 North Rd, Warragul VIC 3820

Tyrell Constructions Pty Ltd, CDB-U 54497.

Lochlin Wall

New Home Consultant

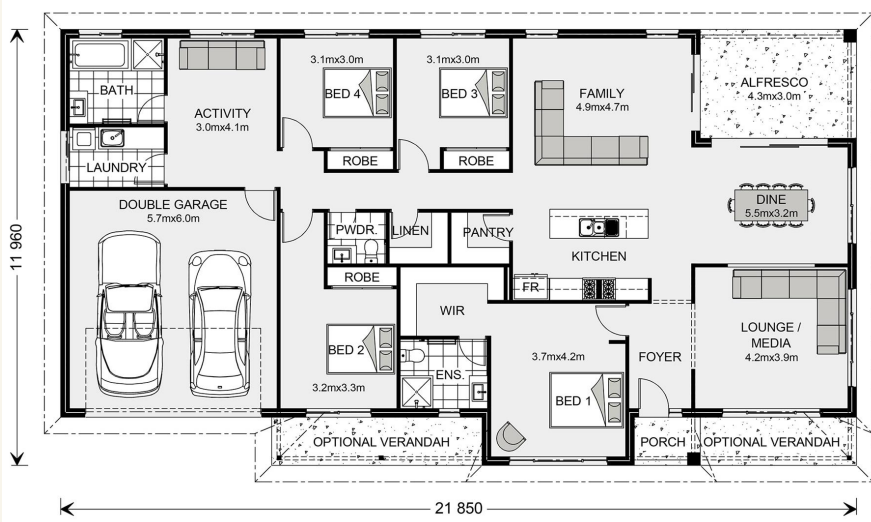
Call: 0435737000

Email: lochlin.wall@gjgardner.com.au

Call: 03 5618 9400

Email: warragul@gjgardner.com.au

Or visit gjgardner.com.au



*Images and photographs may depict fixtures, finishes and features either not supplied by G.J. Gardner Homes or not included in any price stated. These items include furniture, swimming pools, pool decks, fences, landscaping - including planter boxes, retaining walls, water features, pergolas, screens and decorative landscaping items such as fencing and outdoor kitchens and barbeques. For detailed home pricing, please talk to a new homes consultant.

Welcome **home.**

G.J. Gardner. **HOMES**