



## House and land package from \$479,368\*

Address: 20 Page Court, Sale

### Inclusions:

- + Carpet And Vinyl Throughout
- + Central Heating
- + Westinghouse Dishwasher
- + Split System Cooling Unit
- + Concrete Driveway And Alfresco
- + Butlers Pantry

## Edgewater 242 - Element Series

4  2  2 

**Give us a call or drop in for a chat today.**

### Office:

Central Gippsland  
85 Macarthur St, Sale VIC 3850  
APR Constructions CDB-U 62062

Rheanna Palermo

Sales

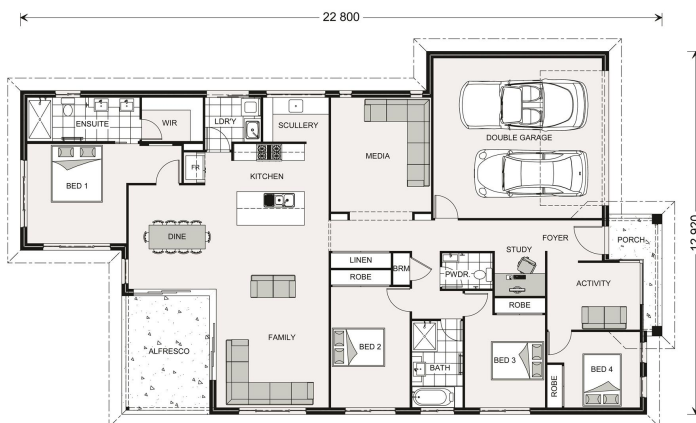
Call: 0447763193

Email: [rheanna.palermo@gjgardner.com.au](mailto:rheanna.palermo@gjgardner.com.au)

Call: 0408 968 858

Email: [centralgippsland@gjgardner.com.au](mailto:centralgippsland@gjgardner.com.au)

Or visit [gjgardner.com.au](http://gjgardner.com.au)



\*Images and photographs may depict fixtures, finishes and features either not supplied by G.J. Gardner Homes or not included in any price stated. These items include furniture, swimming pools, pool decks, fences, landscaping - including planter boxes, retaining walls, water features, pergolas, screens and decorative landscaping items such as fencing and outdoor kitchens and barbeques. For detailed home pricing, please talk to a new homes consultant.

Welcome **home.**

**G.J. Gardner.** HOMES