

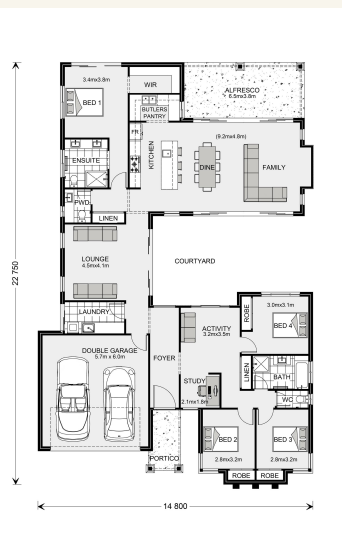


House and land package from \$663,289*

Address: Drouin, Drouin

Inclusions:

- + 20mm Caesarstone Benchtops
- + 2550 Ceiling Height
- + LED Downlights
- + Tiled Shower Bases
- + 900mm Appliances
- +



*Images and photographs may depict fixtures, finishes and features either not supplied by G.J. Gardner Homes or not included in any price stated. These items include furniture, swimming pools, pool decks, fences, landscaping - including planter boxes, retaining walls, water features, pergolas, screens and decorative landscaping items such as fencing and outdoor kitchens and barbecues. For detailed home pricing, please talk to a new homes consultant.

Mandalay 260 - Element Series

4 2 2

Give us a call or drop in for a chat today.

Office:

Warragul

2/131 North Rd, Warragul VIC 3820

Tyrell Constructions Pty Ltd, CDB-U 54497.

Raquel Handley

Sales Consultant

Call: 0458979418

Email: raquel.handley@gjgardner.com.au

Call: 03 5618 9400

Email: warragul@gjgardner.com.au

Or visit gjgardner.com.au

Welcome **home.**

G.J. Gardner. HOMES