

House & Land Package.



House and land package from \$475,900*

Address: 1 Fushcia Crt, Buronga

Inclusions:

- + Carpet & Tiling to Entire Home
- + Rev. Cyc Ducted Air Con & Heating
- + Dishwasher & Garage Remnote
- + Cloths Line & Gates
- + Driveways & Paths
- +

Forest Park 228 - Element Series



Give us a call or drop in for a chat today.

Office:

Mildura

87 Lime Ave, Mildura Vic 3500

Estilo Pty Ltd, CDB-U 49930.

Dennis McPhee

Custom Home Consultant

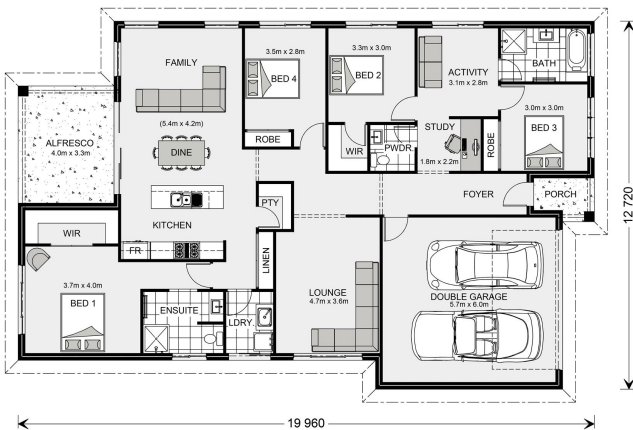
Call: 0427 237 860

Email: dennis.mcphee@gjgardner.com.au

Call: 03 5023 1199

Email: mildura@gjgardner.com.au

Or visit gjgardner.com.au



*Images and photographs may depict fixtures, finishes and features either not supplied by G.J. Gardner Homes or not included in any price stated. These items include furniture, swimming pools, pool decks, fences, landscaping - including planter boxes, retaining walls, water features, pergolas, screens and decorative landscaping items such as fencing and outdoor kitchens and barbeques. For detailed home pricing, please talk to a new homes consultant.

Welcome **home.**

G.J. Gardner. HOMES