

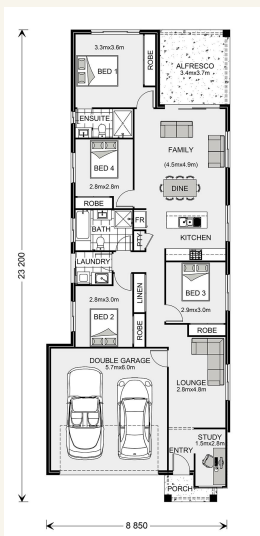


House and land package from \$470,400*

Address: 220 Maitland Street, Kurri Kurri

Inclusions:

- + Genuine Turn Key Packages
- + SMEG Appliances- Technology with Style
- + Square Edge 20mm Stone Benchtops
- + Vinyl Pland and Carpet Floor Coverings
- + LG Ducted Reverse Cycle Air Conditioning
- + Plain Grey Broom Finish Concrete Driveway



*Images and photographs may depict fixtures, finishes and features either not supplied by G.J. Gardner Homes or not included in any price stated. These items include furniture, swimming pools, pool decks, fences, landscaping - including planter boxes, retaining walls, water features, pergolas, screens and decorative landscaping items such as fencing and outdoor kitchens and barbeques. For detailed home pricing, please talk to a new homes consultant.

Newhaven

4 2 2

Give us a call or drop in for a chat today.

Office:

Hunter Valley
100 George St, Singleton NSW 2330
246882C

Ryan Eagles

New Home Consultant

Call: 0447 586 687

Email: ryan.eagles@gjgardner.com.au

Call: 02 6572 2222

Email: huntervalley@gjgardner.com.au

Or visit gjgardner.com.au

Welcome **home.**

G.J. Gardner. HOMES