

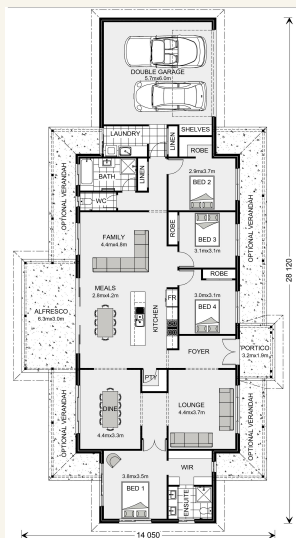


## House and land package from \$604,376\*

Address: Lot 1 Franklin Avenue, Warragul

### Inclusions:

- + 20mm Ceasar Stone Benchtops
- + 2550 Ceiling Height
- + 900mm Appliances
- + Colorbond Roofing
- + Tiled Shower Bases
- + Vinyl Timber Plank Flooring & Carpet



\*Images and photographs may depict fixtures, finishes and features either not supplied by G.J. Gardner Homes or not included in any price stated. These items include furniture, swimming pools, pool decks, fences, landscaping - including planter boxes, retaining walls, water features, pergolas, screens and decorative landscaping items such as fencing and outdoor kitchens and barbeques. For detailed home pricing, please talk to a new homes consultant.

## Maryvale - Homestead Series

4 2 2

**Give us a call or drop in for a chat today.**

### Office:

Warragul  
2/131 North Rd, Warragul VIC 3820  
Tyrrell Constructions Pty Ltd, CDB-U 54497.

### Lochlin Wall

New Home Consultant  
Call: 0435737000  
Email: lochlin.wall@gjgardner.com.au

Call: 03 5618 9400  
Email: warragul@gjgardner.com.au  
Or visit [gjgardner.com.au](http://gjgardner.com.au)

Welcome **home.**

**G.J. Gardner.** HOMES