



## House and land package from \$399,000\*

**Address: 20 Pinnacle Estate, Mildura**

### Inclusions:

- + Mitsubishi Ducted Reverse Cycle
- + Tiling to main floors and wet areas
- + Panel Lift door with Remote
- + Dishwasher and TV Antenna
- + Concrete Driveway and Crossover
- + Walk in Pantry

## Nova 170 - Express Series

3 2 2

**Give us a call or drop in for a chat today.**

### Office:

Mildura  
54 Lime Ave, Mildura Vic 3500  
Estilo Pty Ltd, CDB-U 49930.

### Cameron Woodward

New Home Consultant

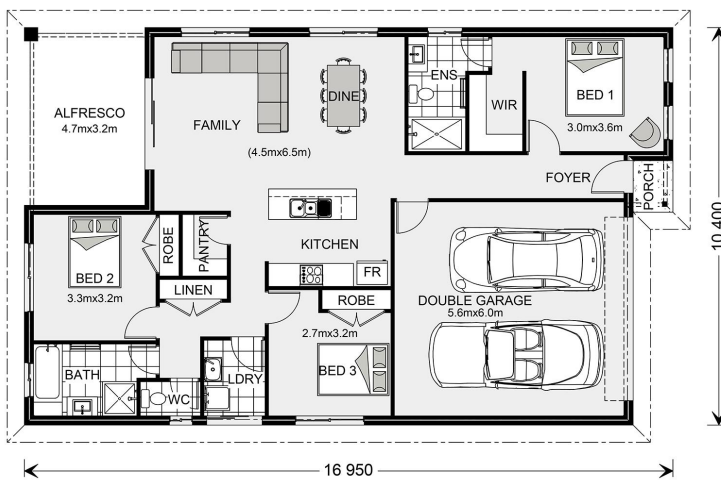
Call: 0468403793

Email: [cameron.woodward@gjgardner.com.au](mailto:cameron.woodward@gjgardner.com.au)

Call: 03 5023 1199

Email: [mildura@gjgardner.com.au](mailto:mildura@gjgardner.com.au)

Or visit [gjgardner.com.au](http://gjgardner.com.au)



\*Images and photographs may depict fixtures, finishes and features either not supplied by G.J. Gardner Homes or not included in any price stated. These items include furniture, swimming pools, pool decks, fences, landscaping - including planter boxes, retaining walls, water features, pergolas, screens and decorative landscaping items such as fencing and outdoor kitchens and barbeques. For detailed home pricing, please talk to a new homes consultant.

Welcome **home.**

**G.J. Gardner.** HOMES