

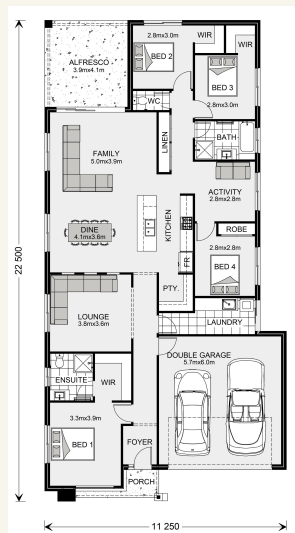


House and land package from \$467,155*

Address: 110 Relph Avenue, Sale

Inclusions:

- + Ducted Heating & Cooling
- + Driveway & Crossover Allowance
- + Caesar Stone to Kitchen
- + Vinyl & Carpet through-out
- + Rotary Clothes line & Colorbond Fence Allowance
- + Hamptons Facade



*Images and photographs may depict fixtures, finishes and features either not supplied by G.J. Gardner Homes or not included in any price stated. These items include furniture, swimming pools, pool decks, fences, landscaping - including planter boxes, retaining walls, water features, pergolas, screens and decorative landscaping items such as fencing and outdoor kitchens and barbecues. For detailed home pricing, please talk to a new homes consultant.

Bridgewater 225 - Element Series

4 2 2

Give us a call or drop in for a chat today.

Office:

Central Gippsland
85 Macarthur St, Sale VIC 3850
APR Constructions Pty Ltd CDB-U 62062

Rheanna Palermo

Sales

Call: 0447763193

Email: rheanna.palermo@gjgardner.com.au

Call: 0408 968 858

Email: centralgippsland@gjgardner.com.au

Or visit gjgardner.com.au

Welcome **home.**

G.J. Gardner. HOMES