



House and land package from \$377,459*

Address: 9 Melaleuca Drive, Wellington

Inclusions:

- + Executive Facade
- + 20mm EssaStone Benchtops
- + SMEG appliances
- + Ducted Reverse Cycle Airconditioning
- + Wall Hung Floating Vanities
- + Driveway, 400m2 turf, Mailbox & Clothesline

Pacific 205

4 2 2

Give us a call or drop in for a chat today.

Office:

Dubbo
118 Erskine St, Dubbo NSW 2830

Cindy Henderson
Sales Consultant

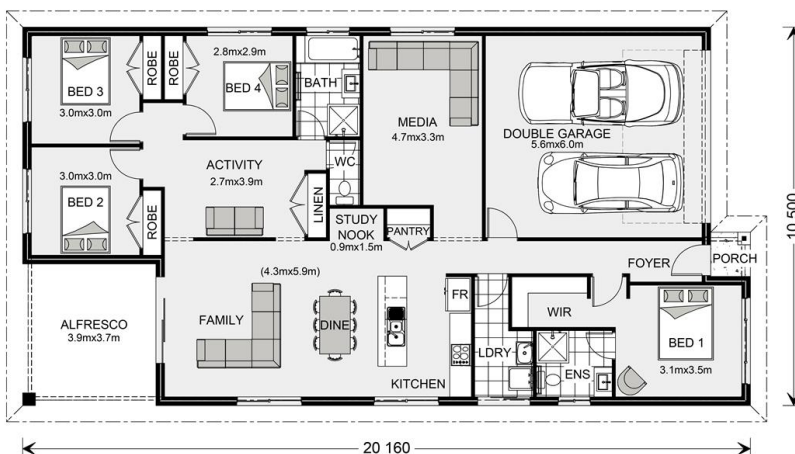
Call: 0438 412 616

Email: cindy.henderson@gjgardner.com.au

Call: 02 6882 4333

Email: dubbo@gjgardner.com.au

Or visit gjgardner.com.au



*Images and photographs may depict fixtures, finishes and features either not supplied by G.J. Gardner Homes or not included in any price stated. These items include furniture, swimming pools, pool decks, fences, landscaping - including planter boxes, retaining walls, water features, pergolas, screens and decorative landscaping items such as fencing and outdoor kitchens and barbeques. For detailed home pricing, please talk to a new homes consultant.

Welcome **home.**

G.J. Gardner. HOMES