

House & Land Package.

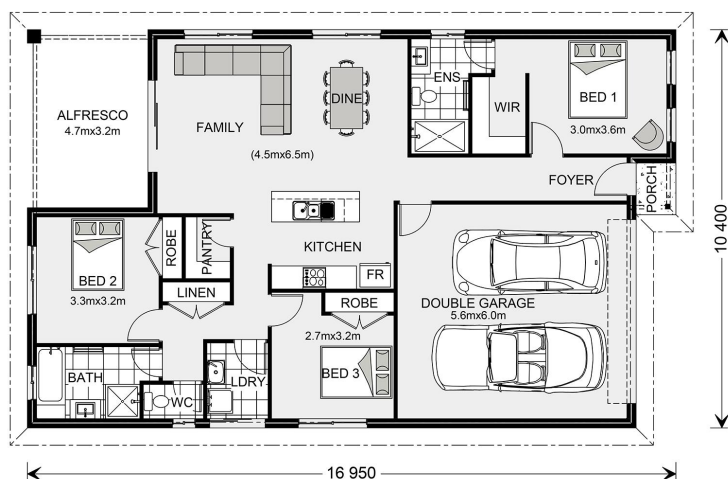


House and land package from \$349,000*

Address: 62 Sixteenth Street, Mildura

Inclusions:

- + Carpet to All Bed Rooms
- + Dishwasher & TV Antenna
- + Gas Duc Heating & Air-Con
- + Classic Facade
- + Open Plan Living
- + Carpet & Tiles



*Images and photographs may depict fixtures, finishes and features either not supplied by G.J. Gardner Homes or not included in any price stated. These items include furniture, swimming pools, pool decks, fences, landscaping - including planter boxes, retaining walls, water features, pergolas, screens and decorative landscaping items such as fencing and outdoor kitchens and barbeques. For detailed home pricing, please talk to a new homes consultant.

Nova 170 - Express Series

3 2 2

Give us a call or drop in for a chat today.

Office:

Mildura

87 Lime Ave, Mildura Vic 3500

Estilo Pty Ltd, CDB-U 49930.

Rod Uren

New Home Consultant

Call: 0459133055

Email: rod.uren@gjgardner.com.au

Call: 03 5023 1199

Email: mildura@gjgardner.com.au

Or visit gjgardner.com.au

Welcome **home.**

G.J. Gardner. HOMES