



## House and land package from \$545,490\*

Address: 30528 Cloverton Estate, Kalkallo

### Inclusions:

- + Upgraded Site Cost Including H Class Slab
- + Gas Ducted Heating and Evap Cooling
- + Flooring Covering Entire Home
- + 900mm Appliances
- + Concrete Driveway
- + LED Downlight Pack

## Brookfield 204

4 2 2

**Give us a call or drop in for a chat today.**

### Office:

Hume  
Unit 4, 1-7 Sussex Crt, Sunbury Vic 3429  
Pinnacle Home Builders Pty Ltd CDB-U 60246

Kevin Micallef

Sales Consultant

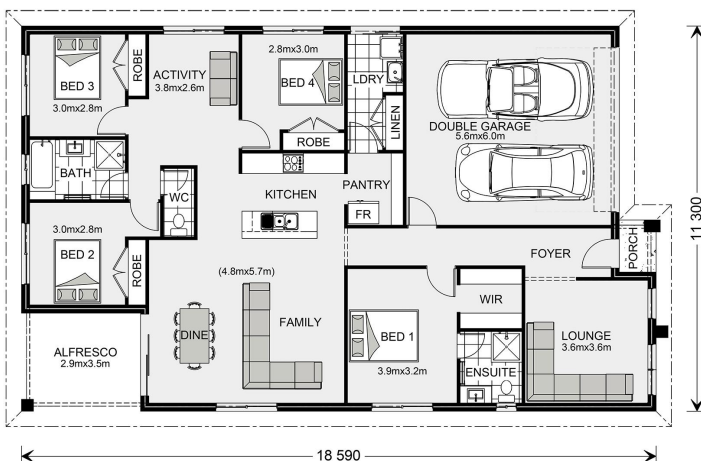
Call: 0407 818 439

Email: [kevin.micallef@gjgardner.com.au](mailto:kevin.micallef@gjgardner.com.au)

Call: 9740 2444

Email: [kevin.micallef@gjgardner.com.au](mailto:kevin.micallef@gjgardner.com.au)

Or visit [gjgardner.com.au](http://gjgardner.com.au)



\*Images and photographs may depict fixtures, finishes and features either not supplied by G.J. Gardner Homes or not included in any price stated. These items include furniture, swimming pools, pool decks, fences, landscaping - including planter boxes, retaining walls, water features, pergolas, screens and decorative landscaping items such as fencing and outdoor kitchens and barbeques. For detailed home pricing, please talk to a new homes consultant.

Welcome **home.**

**G.J. Gardner.** HOMES