

# House & Land Package.



House and land package from \$428,900\*

Address: 180 Platform Estate, Donnybrook

Inclusions:

- + Upgraded Site costs including H Class Slab
- + Ducted heating
- + Floor Coverings to entire home
- + Stainless Steel Appliances
- + Concrete Driveway
- + Automatic Panel Lift Garage Door

**Amandari 137**

3  2  1 

**Give us a call or drop in for a chat today.**

Office:

Hume

Unit 4, 1-7 Sussex Crt, Sunbury Vic 3429

Pinnacle Home Builders Pty Ltd CDB-U 60246

Kevin Micallef

Sales Consultant

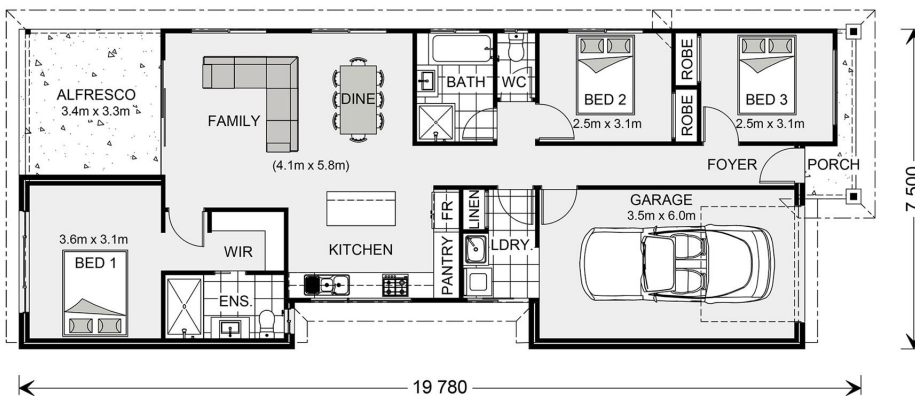
Call: 0407 818 439

Email: [kevin.micallef@gjgardner.com.au](mailto:kevin.micallef@gjgardner.com.au)

Call: 9740 2444

Email: [kevin.micallef@gjgardner.com.au](mailto:kevin.micallef@gjgardner.com.au)

Or visit [gjgardner.com.au](http://gjgardner.com.au)



\*Images and photographs may depict fixtures, finishes and features either not supplied by G.J. Gardner Homes or not included in any price stated. These items include furniture, swimming pools, pool decks, fences, landscaping - including planter boxes, retaining walls, water features, pergolas, screens and decorative landscaping items such as fencing and outdoor kitchens and barbeques. For detailed home pricing, please talk to a new homes consultant.

Welcome **home.**

**G.J. Gardner.** **HOMES**