

House & Land Package.

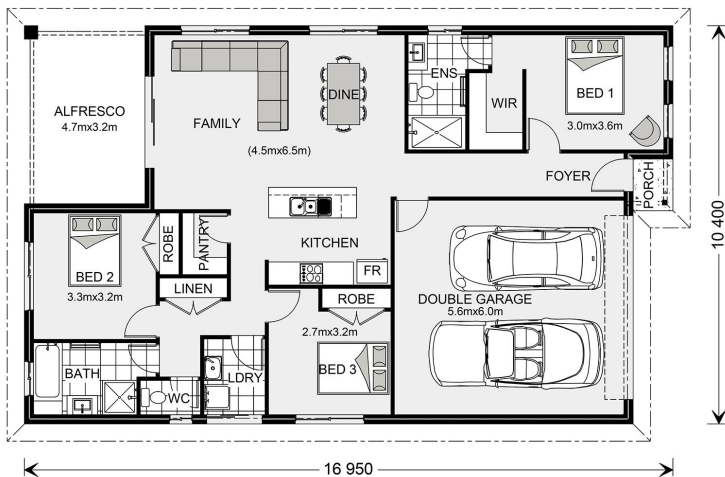


House and land package from \$361,969*

Address: 61 Glebe Drive, Sale

Inclusions:

- + Express Inclusions
- + Crossover & Driveway Allowance
- + Carpet to All Bedrooms
- + Vinyl Flooring through-out
- + Ducted Heating & Cooling
- + Manor Facade



*Images and photographs may depict fixtures, finishes and features either not supplied by G.J. Gardner Homes or not included in any price stated. These items include furniture, swimming pools, pool decks, fences, landscaping - including planter boxes, retaining walls, water features, pergolas, screens and decorative landscaping items such as fencing and outdoor kitchens and barbeques. For detailed home pricing, please talk to a new homes consultant.

Nova 170 - Express Series

3 2 2

Give us a call or drop in for a chat today.

Office:

Central Gippsland

85 Macarthur St, Sale VIC 3850

APR Constructions Pty Ltd CDB-U 62062

Rheanna Palermo

New Home Consultant

Call: 0447763193

Email: rheanna.palermo@gjgardner.com.au

Call: 03 5143 1499

Email: centralgippsland@gjgardner.com.au

Or visit gjgardner.com.au

Welcome **home.**

G.J. Gardner. **HOMES**