

House & Land Package.



House and land package from \$628,999*

Address: 1123 Clifton Crescent, Cowes

Inclusions:

- + 40m² Plain Concrete Driveway
- + Floor Coverings Throughout
- + Split System Heating and Cooling
- + Clothesline and Letterbox
- + Window and Sliding Door Flyscreens
- + Dishwasher

Stillwater 264



Give us a call or drop in for a chat today.

Office:

Bass Coast - Phillip Island
1/219 Settlement Rd, Cowes Vic 3922
Urban Rescue Pty Ltd, CDB-U 48925.

Robyn Gordon

New Home Consultant

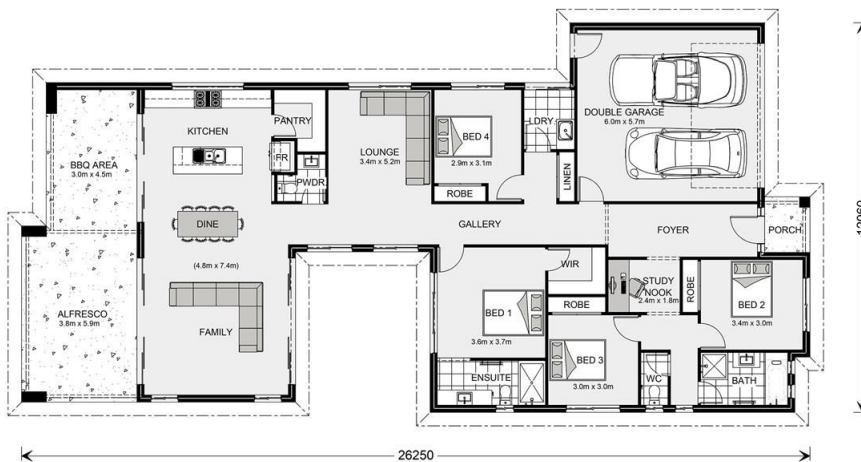
Call: 0437669789

Email: robyn.gordon@gjgardner.com.au

Call: 03 5952 2150

Email: basscoast@gjgardner.com.au

Or visit gjgardner.com.au



*Images and photographs may depict fixtures, finishes and features either not supplied by G.J. Gardner Homes or not included in any price stated. These items include furniture, swimming pools, pool decks, fences, landscaping - including planter boxes, retaining walls, water features, pergolas, screens and decorative landscaping items such as fencing and outdoor kitchens and barbecues. For detailed home pricing, please talk to a new homes consultant.

Welcome **home.**

G.J. Gardner. **HOMES**