

House & Land Package.



House and land package from \$473,572*

Address: 2 Leura Lane, Hamilton

Inclusions:

- + 4 x Bedroom
- + 2 x Bathroom
- + WIR
- + Open Plan Living
- + Alfresco
- + 2 x Car Garage

Wishart 206 - Express Series

4 2 2

Give us a call or drop in for a chat today.

Office:

Hamilton

44 Gray Street, Hamilton Vic 3300

Jacorey Pty Ltd, CDB-U 49694.

Pene Baker

New Home Consultant

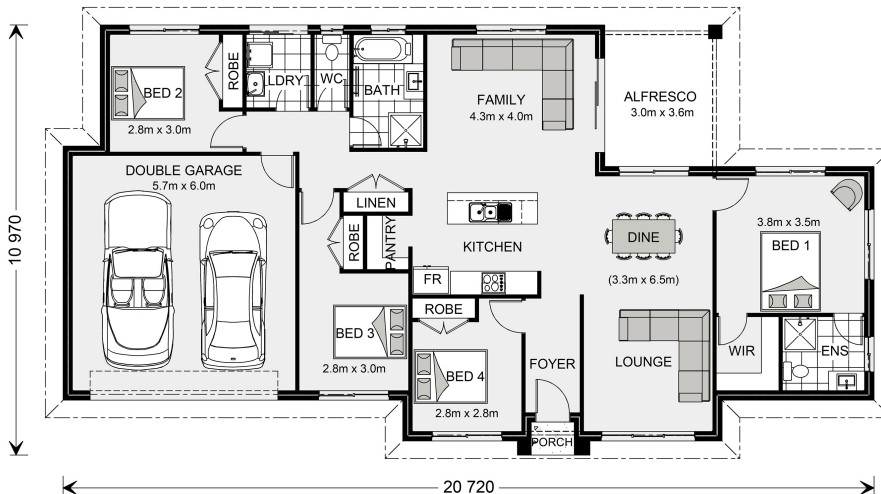
Call: 0410292553

Email: pene.baker@gjgardner.com.au

Call: 03 5352 3298

Email: ararat@gjgardner.com.au

Or visit gjgardner.com.au



*Images and photographs may depict fixtures, finishes and features either not supplied by G.J. Gardner Homes or not included in any price stated. These items include furniture, swimming pools, pool decks, fences, landscaping - including planter boxes, retaining walls, water features, pergolas, screens and decorative landscaping items such as fencing and outdoor kitchens and barbeques. For detailed home pricing, please talk to a new homes consultant.

Welcome **home.**

G.J. Gardner. **HOMES**