

House & Land Package.

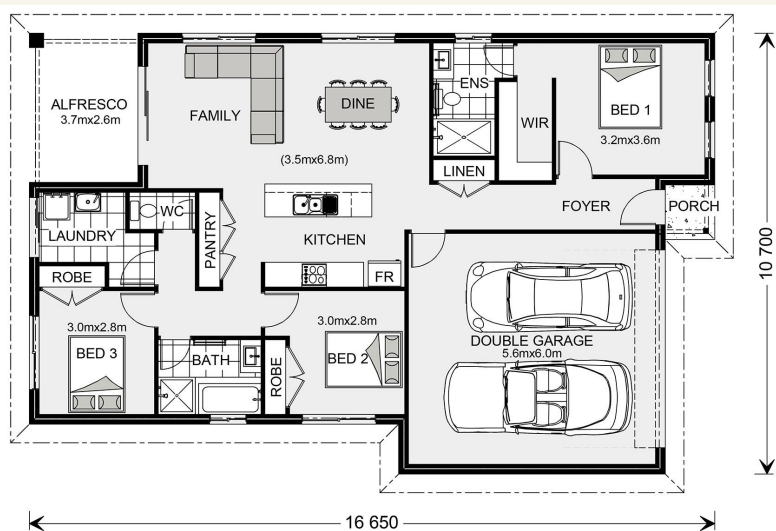


House and land package from \$580,700*

Address: 3 Verdant Avenue, Greenvale

Inclusions:

- + Concrete Driveway
- + Ducted Heating & Cooling
- + Flooring to entire home
- + 900mm Appliances & Caesarstone Benchtops
- + 2590mm Ceilings & LED Downlights
- + Upgraded Site Costs inc 'H' Class Slab (No piers)



*Images and photographs may depict fixtures, finishes and features either not supplied by G.J. Gardner Homes or not included in any price stated. These items include furniture, swimming pools, pool decks, fences, landscaping - including planter boxes, retaining walls, water features, pergolas, screens and decorative landscaping items such as fencing and outdoor kitchens and barbeques. For detailed home pricing, please talk to a new homes consultant.

Nova 160

3 2 2

Give us a call or drop in for a chat today.

Office:

Hume

Unit 4, 1-7 Sussex Crt, Sunbury Vic 3429

Pinnacle Home Builders Pty Ltd CDB-U 60246

Kevin Micallef

Sales Consultant

Call: 0407 818 439

Email: kevin.micallef@gjgardner.com.au

Call: 9740 2444

Email: kevin.micallef@gjgardner.com.au

Or visit gjgardner.com.au

Welcome **home.**

G.J. Gardner. **HOMES**