

# House & Land Package.

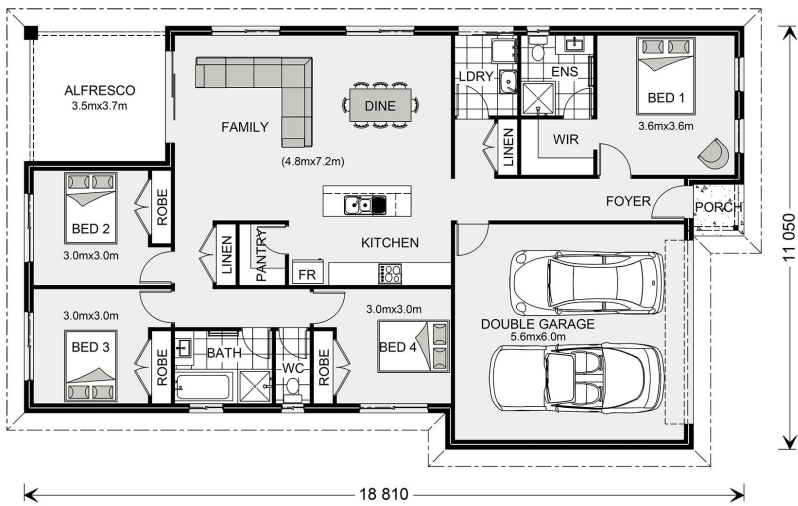


House and land package from \$604,900\*

Address: 1 Verdant Avenue, Greenvale

Inclusions:

- + Select Inclusions
- + Upgraded H Class Slab
- + Floor Coverings throughout
- + 900mm Appliances
- + Heating & Cooling
- + Driveway



\*Images and photographs may depict fixtures, finishes and features either not supplied by G.J. Gardner Homes or not included in any price stated. These items include furniture, swimming pools, pool decks, fences, landscaping - including planter boxes, retaining walls, water features, pergolas, screens and decorative landscaping items such as fencing and outdoor kitchens and barbecues. For detailed home pricing, please talk to a new homes consultant.

**Nova 190 - Element Series**

4 2 2

**Give us a call or drop in for a chat today.**

Office:

Hume

Unit 4, 1-7 Sussex Crt, Sunbury Vic 3429

Pinnacle Home Builders Pty Ltd CDB-U 60246

Kevin Micallef

Sales Consultant

Call: 0407 818 439

Email: [kevin.micallef@gjgardner.com.au](mailto:kevin.micallef@gjgardner.com.au)

Call: 9740 2444

Email: [kevin.micallef@gjgardner.com.au](mailto:kevin.micallef@gjgardner.com.au)

Or visit [gjgardner.com.au](http://gjgardner.com.au)

Welcome **home.**

**G.J. Gardner.** **HOMES**