

# House & Land Package.



House and land package from \$610,900\*

Address: 3 Verdant Avenue, Greenvale

Inclusions:

- + 22.11 squares with H class Slab (no piers)
- + Ducted Heating & Cooling
- + Stone Benchtops throughout with 900mm Appliances
- + Flooring throughout entire home
- + 2590 ceilings with brick infills & Downlights
- + Concrete Driveway

Pacific 205 - Element Series

4  2  2 

Give us a call or drop in for a chat today.

Office:

Hume

Unit 4, 1-7 Sussex Crt, Sunbury Vic 3429

Pinnacle Home Builders Pty Ltd CDB-U 60246

Kevin Micallef

Sales Consultant

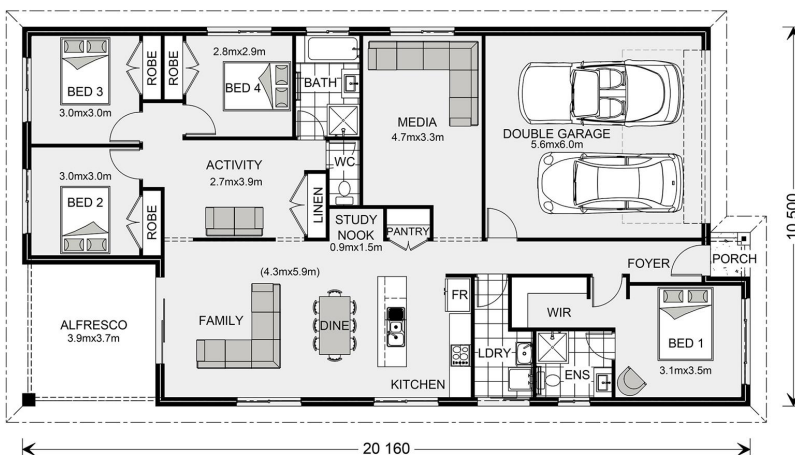
Call: 0407 818 439

Email: [kevin.micallef@gjgardner.com.au](mailto:kevin.micallef@gjgardner.com.au)

Call: 9740 2444

Email: [kevin.micallef@gjgardner.com.au](mailto:kevin.micallef@gjgardner.com.au)

Or visit [gjgardner.com.au](http://gjgardner.com.au)



\*Images and photographs may depict fixtures, finishes and features either not supplied by G.J. Gardner Homes or not included in any price stated. These items include furniture, swimming pools, pool decks, fences, landscaping - including planter boxes, retaining walls, water features, pergolas, screens and decorative landscaping items such as fencing and outdoor kitchens and barbeques. For detailed home pricing, please talk to a new homes consultant.

Welcome **home.**

G.J. Gardner. **HOMES**