



Kingaroy 302

AWARD
SERIES



Resort Facade

The **Kingaroy 302** is a generously proportioned home, ideally suited to a wide or rural site.

The master bedroom boasts a resort style ensuite and is positioned for privacy. The well-appointed kitchen is the hub of the entertaining areas including a games room, family room and large alfresco area. You will be the envy of all your family and friends with this spectacular new home.

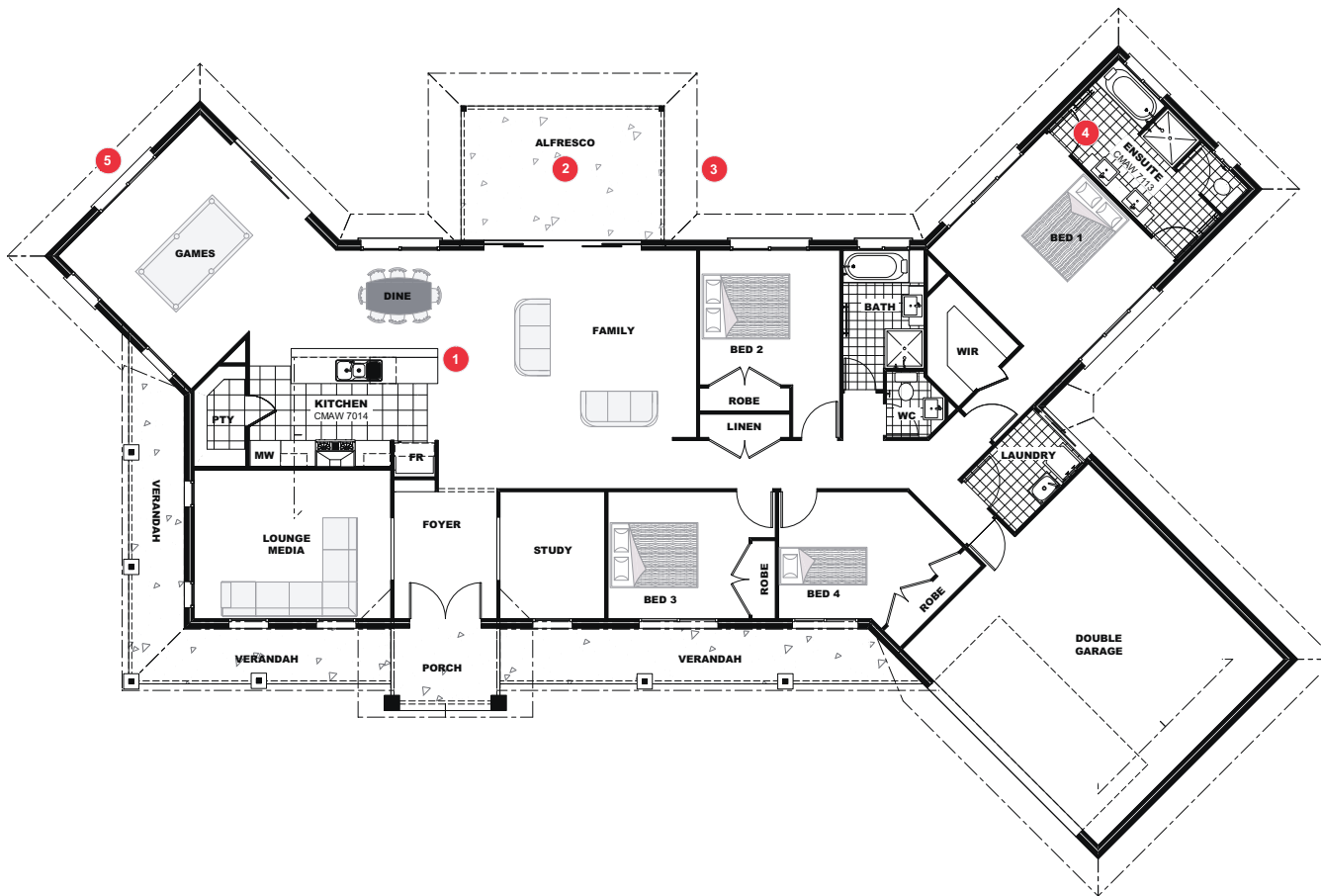
G.J. Gardner. **HOMES**
"Get The Facts Upfront"

Kingaroy 302



Standard Floorplan ▼

Resort Facade floorplan shown



Features include:

- 4 bedrooms
- Study
- Media room
- Formal dining
- Large kitchen
- Family room
- Games room
- Large ensuite
- Large walk-in robe
- Bathroom
- Powder room
- Double garage
- Alfresco
- Raised portico



Classic Facade

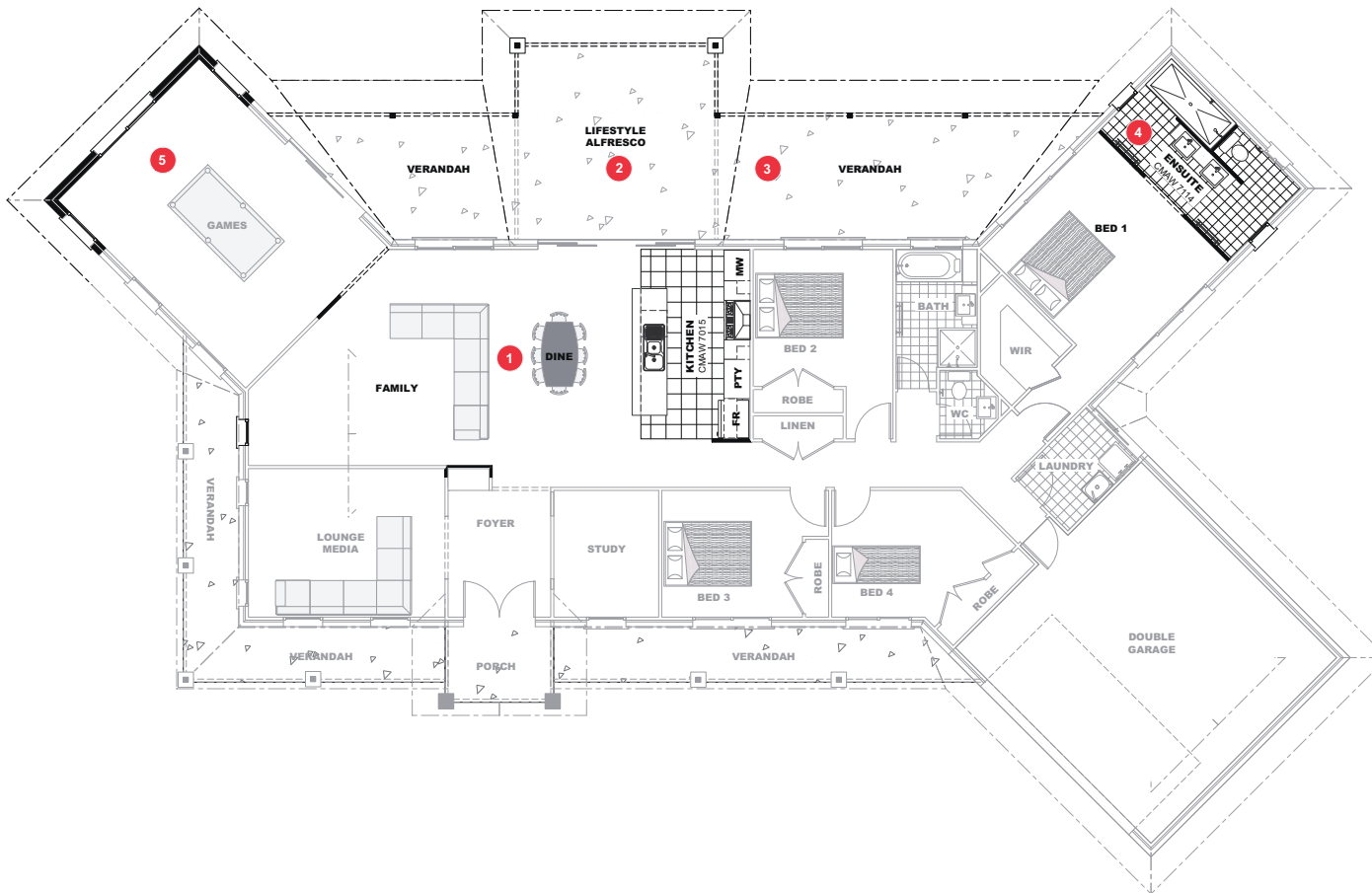
FLOOR AREAS

Internal:	215.9m ²
Alfresco:	14.2m ²
Porch:	4.5m ²
Verandah:	26.8m ²
Garage:	40.8m ²
TOTAL	302.2m²

LOT TYPE

Lifestyle

Kingaroy 302



- 1 KITCHEN / FAMILY**
- Relocated Family
 - Relocated Kitchen (CMAW 7015)
 - Large open plan Family and Dining
 - 1800x600 DH window added to Family

- 2 LIFESTYLE ALFRESCO**
- 6.7m² space gain
 - Boots added to base of timber posts

- 3 VERANDAHS**
- Undercover areas both side of Alfresco
 - 33.6m² space gain

- 4 ENSUITE**
- Reconfigured Ensuite (CMAW 7113)

- 5 GAMES ROOM**
- Games extended
 - 9.0m² space gain
 - 2/1800x900 DH windows added