

# House & Land Package.

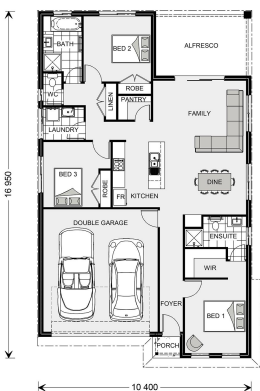


House and land package from \$814,515\*

Address: 125 Parker Drive, Lilydale

Inclusions:

- + 2550mm High Ceilings
- + Caesarstone Benches to Kitchen, Bathroom and Ensuite
- + 900mm Freestanding Cooker and Canopy Rangehood
- + Panel Lift Garage Door with 2 key Fobs
- + Semi Frameless Shower with Tiled Shower Base
- + Feature Front Door Corinthian PMAD 104



\*Images and photographs may depict fixtures, finishes and features either not supplied by G.J. Gardner Homes or not included in any price stated. These items include furniture, swimming pools, pool decks, fences, landscaping - including planter boxes, retaining walls, water features, pergolas, screens and decorative landscaping items such as fencing and outdoor kitchens and barbeques. For detailed home pricing, please talk to a new homes consultant.

**Nova 170 - Element Series**

3 2 2

**Give us a call or drop in for a chat today.**

**Office:**

Melbourne East - Knox, MaroonDAH  
231 Stud Road, Wantirna South VIC 3152  
Moore Building Concepts Pty Ltd, CDB-U 49268.

**Sharon Vidot**

**New Home Consultant**

**Call: 0421 050 845**

**Email: [sharon.vidot@gjgardner.com.au](mailto:sharon.vidot@gjgardner.com.au)**

**Call: 03 9887 4544**

**Email: [melbourneeast@gjgardner.com.au](mailto:melbourneeast@gjgardner.com.au)**

**Or visit [gjgardner.com.au](http://gjgardner.com.au)**

Welcome **home.**

**G.J. Gardner.** **HOMES**