

House & Land Package.



House and land package from \$1,223,000*

Address: 70 Grandview Terrace, Mount Martha

Inclusions:

- + 20mm Caesarstone Benchtops to Kitchen, Bathroom, Ensuite and Laundry
- + Westinghouse 900mm Freestanding Stainless Steel Appliances
- + Gas Ducted Heating and Rinnai Solar Hot Water
- + Dowell Double Glazed Windows including Window Locks and Flyscreens
- + Floor Coverings from Builders Range 1 & 2
- + B&D Automatic Panel Lift Garage Door

Legana 201 SL - Split Level Series

4 2 2

Give us a call or drop in for a chat today.

Office:

Mornington

5/234 Main Street, Mornington Victoria 3931

Mornington Peninsula Homes Pty Ltd, CDB-U 58234.

Eleonore Caruana

New Home Consultant

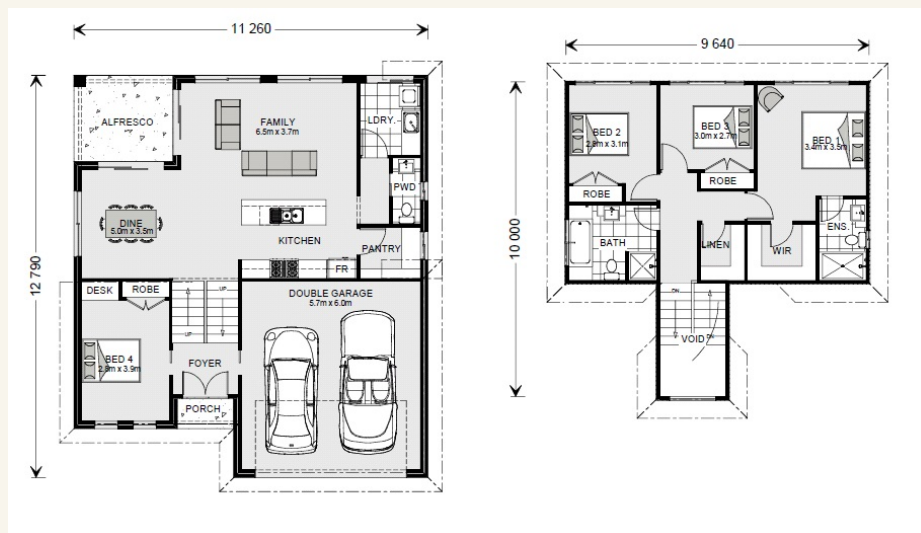
Call: 0448 011 141

Email: eleonore.caruana@gjgardner.com.au

Call: (03) 5975 1122

Email: mornington@gjgardner.com.au

Or visit gjgardner.com.au



*Images and photographs may depict fixtures, finishes and features either not supplied by G.J. Gardner Homes or not included in any price stated. These items include furniture, swimming pools, pool decks, fences, landscaping - including planter boxes, retaining walls, water features, pergolas, screens and decorative landscaping items such as fencing and outdoor kitchens and barbeques. For detailed home pricing, please talk to a new homes consultant.

Welcome **home.**

G.J. Gardner. HOMES